



# Temp & Humidity Solutions



## Wireless temperature and humidity solutions to fit your application



- 1-wire serial and Modbus interfaces
- Available in 900 MHz and 2.4 GHz
- Achieves temperature accuracy of  $\pm 0.3\text{ }^{\circ}\text{C}$
- Achieves humidity accuracy of  $\pm 2\%$  relative humidity
- Traceable to NIST standards
- Temperature and relative humidity sensing elements housed in a robust metal housing

## NIST Traceability Calibration Statement

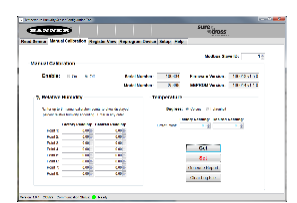


## Certificate of Factory Calibration

\*Unique to each sensor shipped



## USB field calibration tool & software (Model #: BWA-USB1WIRE-001)





# Temp & Humidity Solutions

Sensors with Serial interface:

Models	Description
M12FT4Q	Temperature sensor with 1-wire Serial interface
M12FTH4Q	Temperature and humidity sensor with 1-wire Serial interface



Radios with Serial interface:

Models	Description	Frequency
DX80N2Q45TH	Q45 Temp/humidity node	2.4 GHz
DX80N9X1S-P6	1-wire Serial Performance node	900 MHz
DX80N2X1S-P6		2.4 GHz
DX80DR9M-H6	1-wire Serial Modbus MultiHop Slave	900 MHz
DX80DR2M-H6		2.4 GHz



Sensors with Modbus RTU, RS-485 interface:

Models	Description
M12FT3Q	Temperature sensor with Modbus RTU, RS-485 interface
M12FTH3Q	Temperature and humidity sensor with Modbus RTU, RS-485 interface



Radios with Modbus RTU, RS-485 interface:

Models	Description	Frequency
DX80DR9M-H1	Inputs: Four discrete, two 0 – 20 mA analog, one thermistor, one counter Outputs: Two NMOS discrete Switch Power Outputs: Two Serial interface: RS-485	900 MHz
DX80DR9M-H1E		900 MHz
DX80DR2M-H1		2.4 GHz
DX80DR2M-H1E		2.4 GHz
DX80DR9M-H2	Inputs: Four discrete, two 0-20 mA analog Outputs: Four sourcing discrete, two 0-20 mA analog Serial interface: RS-485	900 MHz
DX80DR2M-H2		2.4 GHz
DX80DR9M-HB1	Inputs: Two NPN discrete, two 0-20 mA analog Outputs: Two NMOS discrete Switch Power Outputs: Two	900 MHz
DX80DR2M-HB1		2.4 GHz
DX80DR9M-HB2	Inputs: Two PNP discrete, two 0-20 mA analog Outputs: Two PNP discrete, two 0-20 mA analog	900 MHz
DX80DR2M-HB2		2.4 GHz
DX80SR9M-H	Serial interface: RS-232, RS-485	900 MHz
DX80SR2M-H		2.4 GHz



"E" housing



Board module